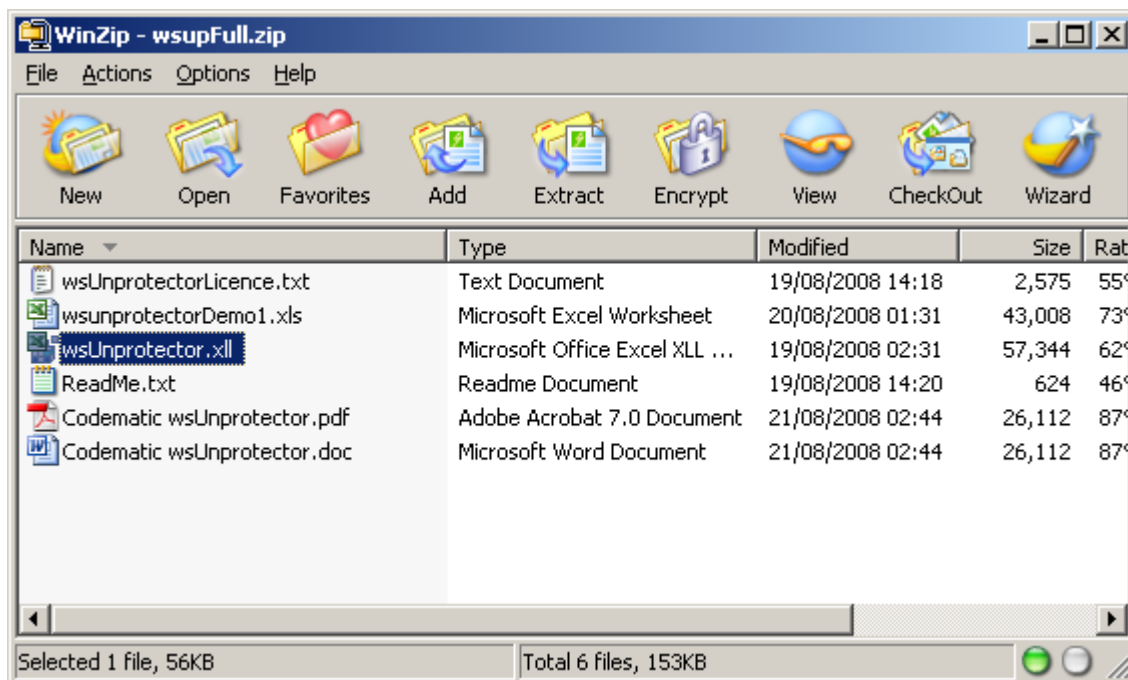


# Codematic wsUnprotector

Codematic wsUnprotector is an Excel add-in that quickly removes worksheet and workbook structure passwords.

## Zip contents

1. wsUnprotector.xll add-in (should be signed with the Codematic Thawte code signing certificate)
2. The Licence
3. Demo workbook with VBA examples
4. Documentation (.doc and .pdf) (this file)
5. A readme.txt



## Installation

You should ensure you will comply with the terms of the licence before using or installing the software. If you cannot or will not agree to the licence terms then please delete all parts of the software from your system.

## Quickstart

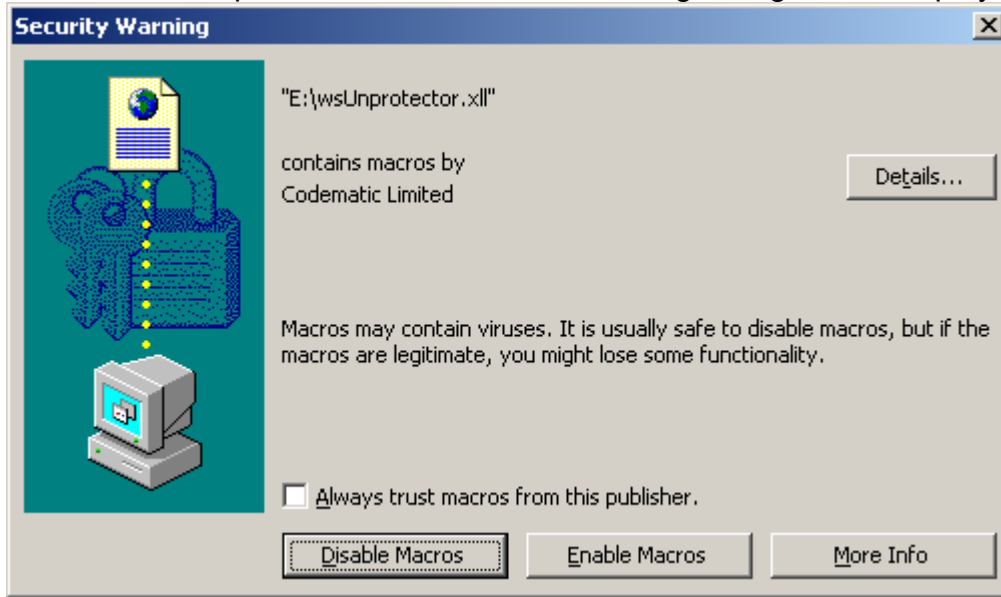
To get going quickly just double click the .xll from the zip, enable macros when asked. Click Unprotect>>Unprotect Active sheet to remove worksheet passwords.

## Full install

### Simple Use

From the zip you can just doubleclick the .xll file. If you do not have zip software then we recommend (and use) WinZip

The .xll will be opened in Excel and the following dialog will be displayed



Click Enable macros to use the features of Codematic wsUnprotector. Click 'Always trust macros from this publisher' if you want to avoid being shown this warning every time you open wsUnprotector or any other add-ins from Codematic. (In a corporate environment you may not have the necessary system permissions to 'always trust this publisher')

(See 'More on code signing certificates' below for more information.)

### Full install

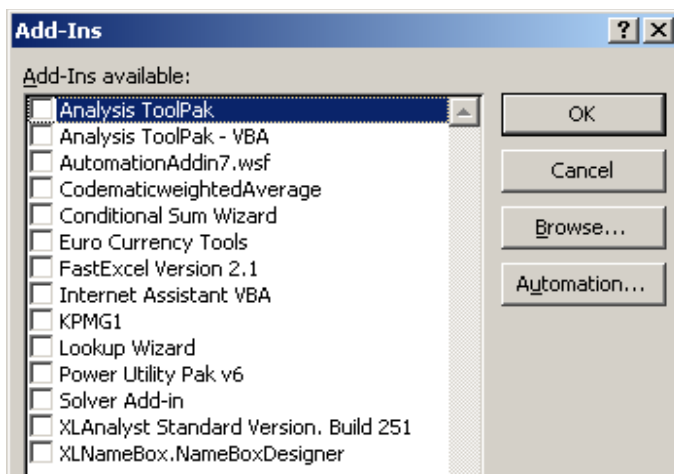
Double clicking runs the addin for that single Excel session, when you close and reopen Excel Codematic wsUnprotector will not load automatically, you will need to double click the .xll in Windows explorer again (or use File>>Open... in Excel).

To perform a fuller install, click the Extract button in Winzip to unpack all the files from the zip to a convenient folder on your pc. You can now gain more control over how and when wsUnprotector is loaded into Excel by using the Tools>>Add-ins feature to add it to the list of available add-ins.

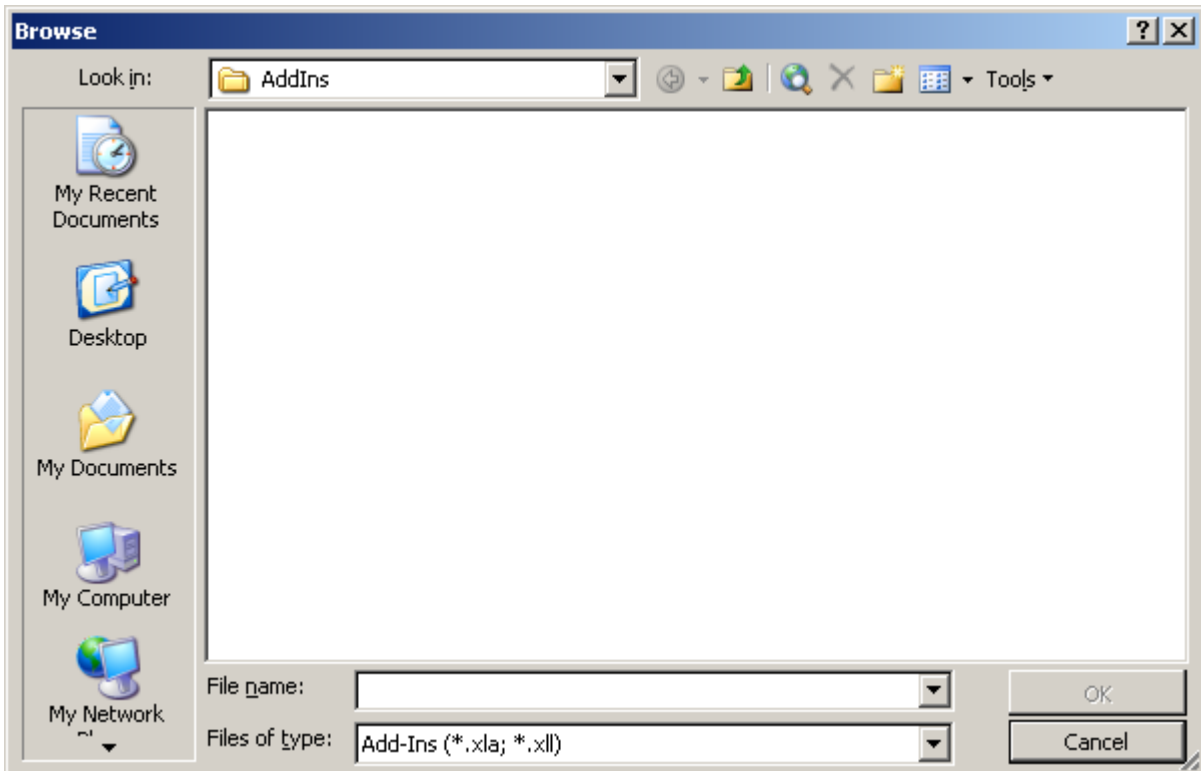
Open Excel

Ensure a workbook is open

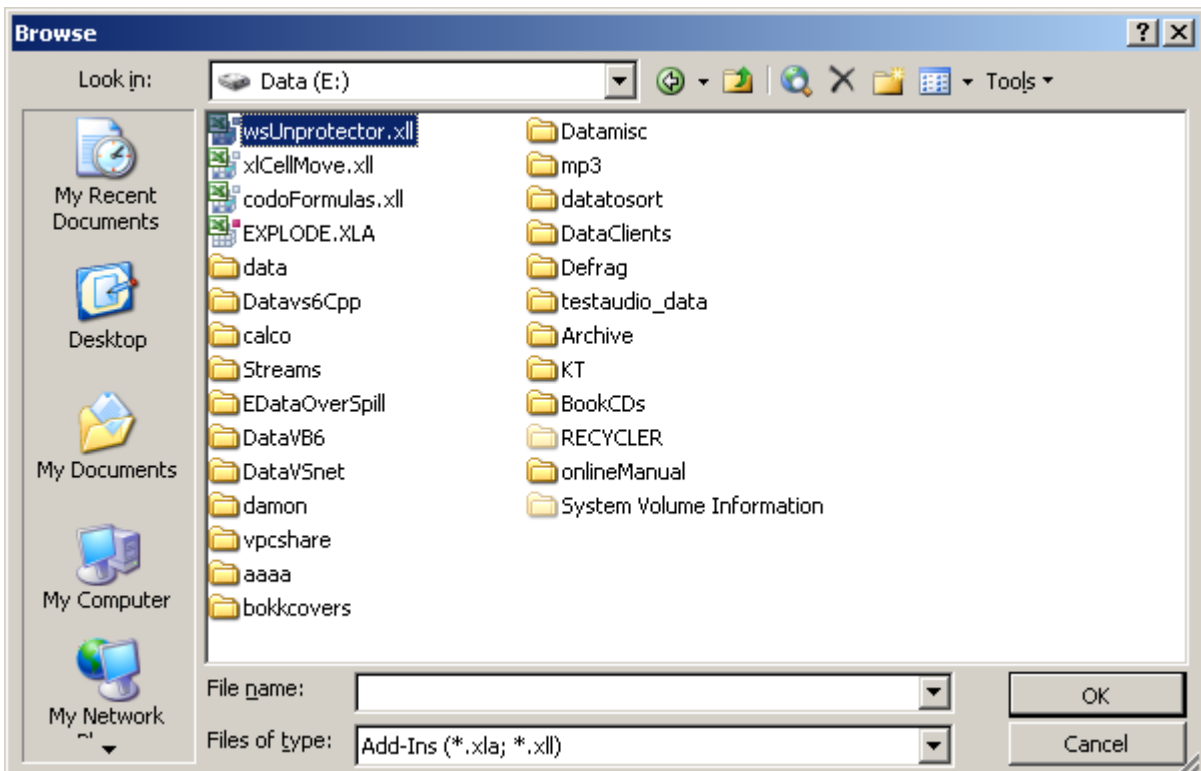
Click Tools>>Add-ins to bring up the following dialog:



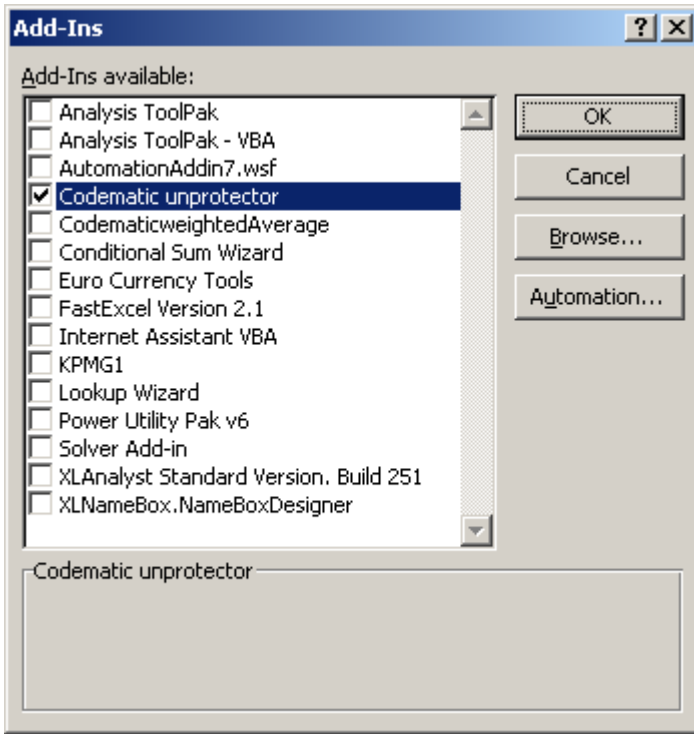
Click Browse to open a standard file open dialog:



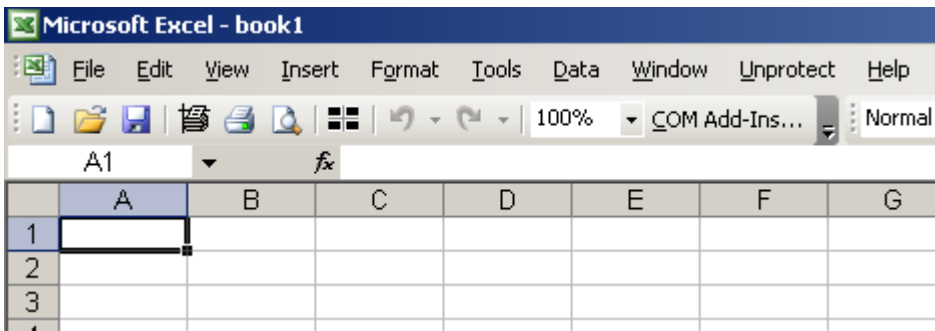
This defaults to the standard MS install path for add-ins, but you can point it anywhere. Point it to wherever you extracted wsUnprotector and select the wsUnprotector.xll file, click OK.



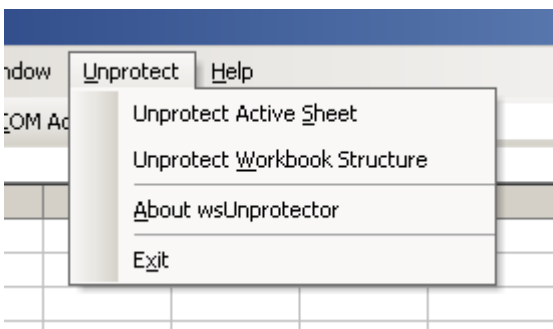
That adds it to the list of available add-ins and sets it to be loaded when you click OK.



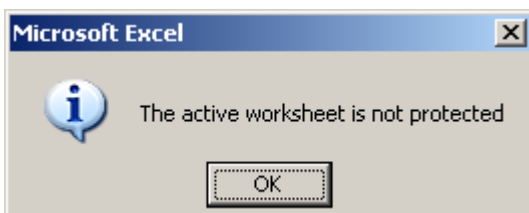
Click OK to finish loading the add-in.



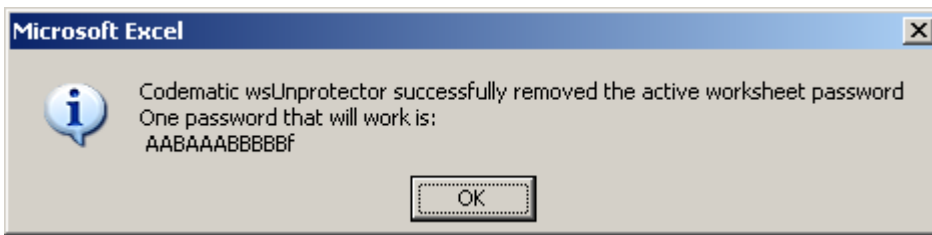
Codematic wsUnprotector is now loaded and the menu is available to remove unwanted worksheet and workbook passwords.



To test, open a new blank workbook, click Unprotect>>Unprotect Active Sheet, you should get the following message:



Click Tools>>Protection>>Protect Worksheet and pick a password.  
Click Tools>>Unprotect>>Unprotect Active Sheet, within a couple of seconds you should get:



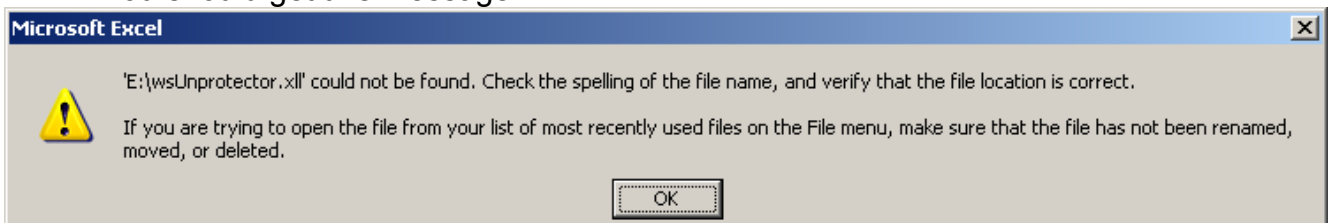
If you do not require wsUnprotector for most Excel session you can un-tick it in the available add-in list (Tools >> Add-ins). It then won't load on Excel start up, but you can load it anytime by ticking it in that list.

You can also close wsUnprotector by clicking its Exit menu item. This unloads it from Excel, you can reload it any time using any of the above methods.

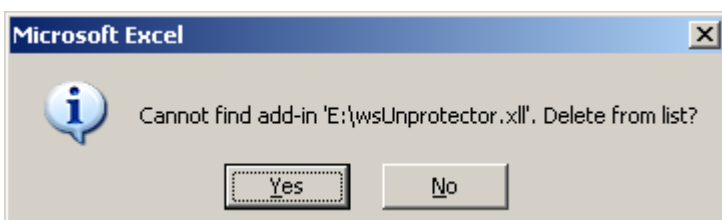
## ***wsUnprotector Removal***

To later remove wsUnprotector (or any other .xll or .xla add-in) from the list of available add-ins follow this procedure:

- Remove the tick from the add-in in the available add-ins list.
- Close Excel
- Delete the file (or move it)
- Open Excel
- Select Tools>>Add-ins and try to tick the addin
- You should get this message:



Click ok, Excel offers to remove it from the list  
Click yes

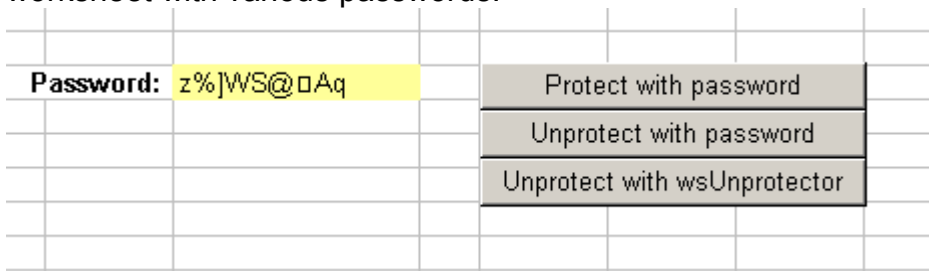


The add-in will no longer show in the list of available ones.

To completely remove wsUnprotector from your system, simply delete the original zip and all files extracted from it. Excel should then offer to remove it from the list of available add-ins if appropriate. wsUnprotector does not read or modify the registry, in use or on install/removal.

## The Demo workbook

wsUnprotector ships with a demo workbook that lets you easily protect and unprotect a worksheet with various passwords.



It also contains VBA to automate wsUnprotector to unprotect all worksheets in a workbook (only works with the full version of wsUnprotector)

```
'// Only works with full version, not trial
Public Sub UnprotectAllSheetsInWB ()

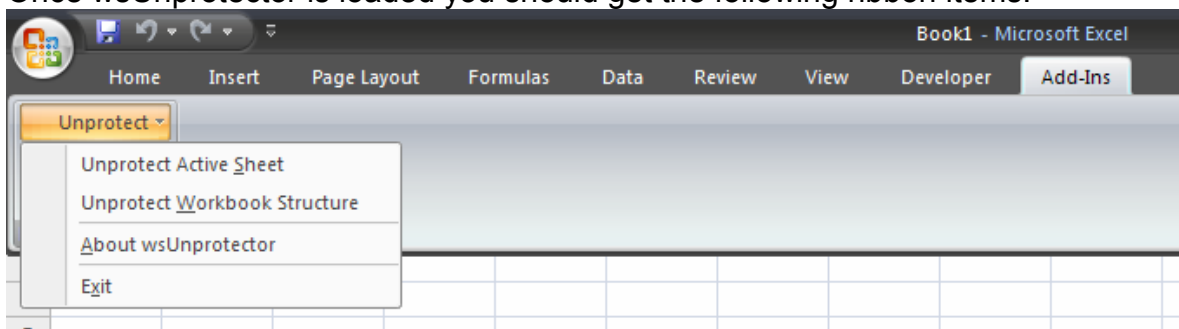
    Dim ws As Worksheet

    For Each ws In ThisWorkbook.Worksheets
```

## Excel 2007 installation

Basically the same as 2003 with the choice of a simple double click or installing into the list of available add-ins.

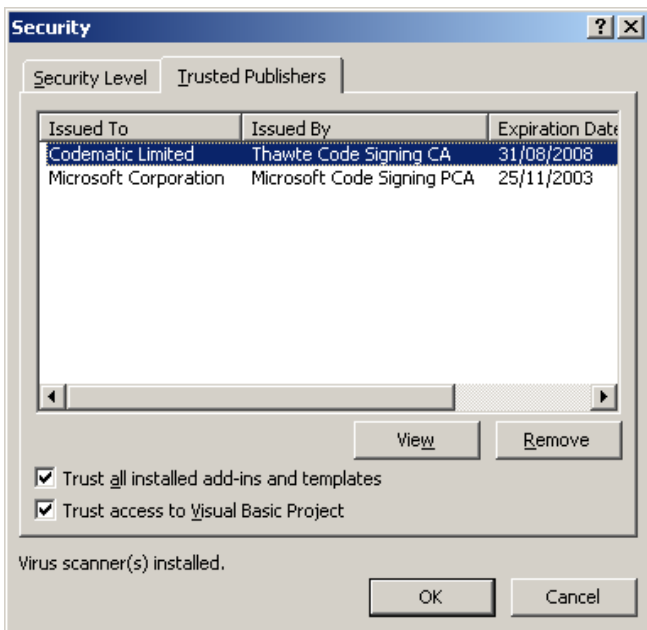
Once wsUnprotector is loaded you should get the following ribbon items:



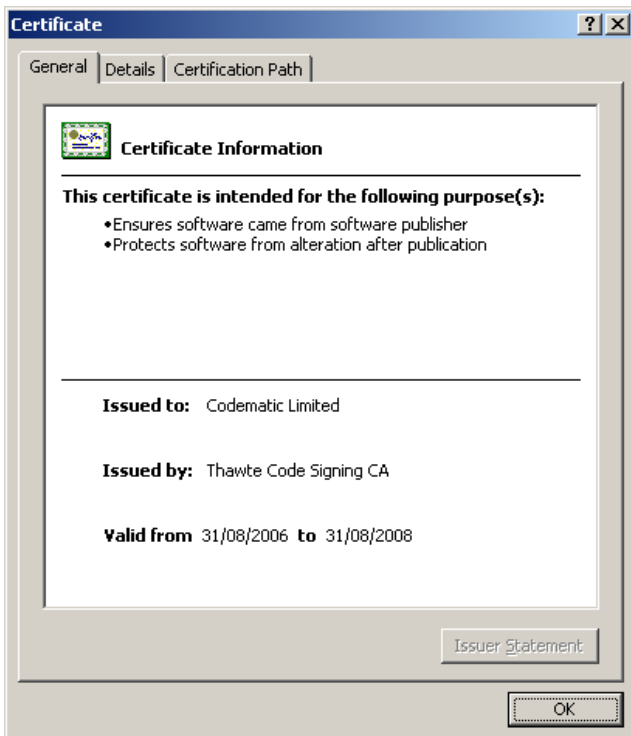
## More on code signing certificates

Digitally signing a product 'proves' that it came from the publisher. A digital signature is unique to a publisher, and they need to prove they are who they say they are to a Certificate Authority. Digital signature have been good practice for years but with the current increase in security awareness they are becoming more standard. This is a good thing for customers as it means the true publisher can be easily traced, and is difficult to impersonate.

You can view the certificate you have trusted at any time by clicking Tools>>Macro>>Security then clicking the trusted publishers tab.



You can view details of an individual certificate by clicking View.



## ***Notes about wsUnprotector***

wsUnprotector does not remove workbook open passwords. It is not a security product, it does not bypass or defeat Excel security. It merely removes the usability passwords that some people set to prevent accidental changes to their workbooks.

The main advantage of wsUnprotector over other password removal methods is performance. And of course commercial quality support.

There are two versions of the wsUnprotector

The **trial** version removes worksheet passwords, but is mainly to demonstrate the speed of wsUnprotector compared to some of the VB/VBA based password removers. wsUnprotector takes about 1 second on 'standard' pc where a VBA based remover will take between 1 and 2 minutes. If you find the improved performance useful then it is expected that you will buy the full version. The trial version has several reminders that it is for demonstration purposes. It also has less functionality than the full version.

The **full** version of wsUnprotector removes both worksheet passwords and workbook structure/window passwords (not workbook open ones). This version also provides a working password that can be used to re-protect the sheet/book if required. This may not be the original password, but will enable the sheet to be unprotected with the original. The full version can also be automated from VBA to unprotect all sheets in a workbook (demo VBA code included)

We hope you find wsUnprotector useful, and we welcome any feedback good or bad at [feedback@codematic.net](mailto:feedback@codematic.net)